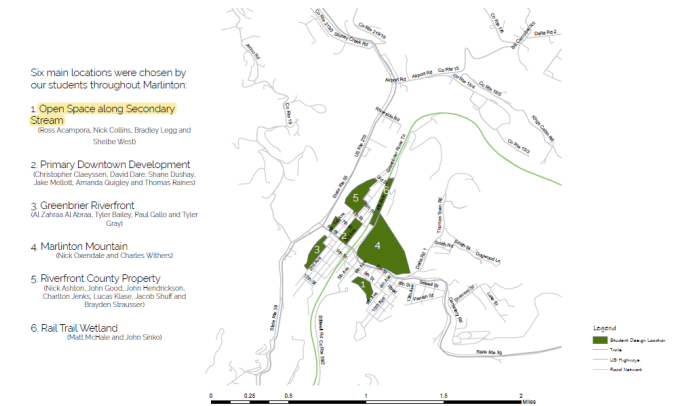


# WVU School of Design and Community Development: Community Engagement Lab Case Study Example Community Design in Marlinton, WV. & Site Design at Discovery Junction



Students working with the Marlinton community to identify opportunities



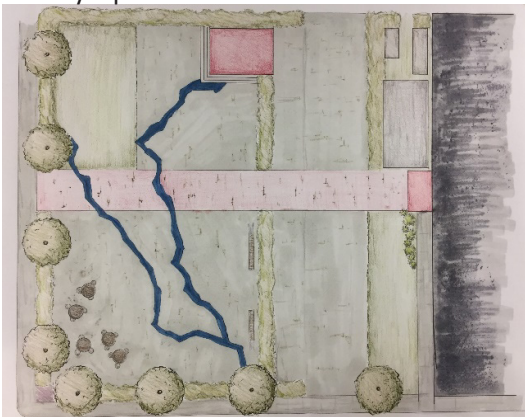
Sites identified as opportunities in Marlinton



A former gas station site adjacent to the Pocahontas County Opera House

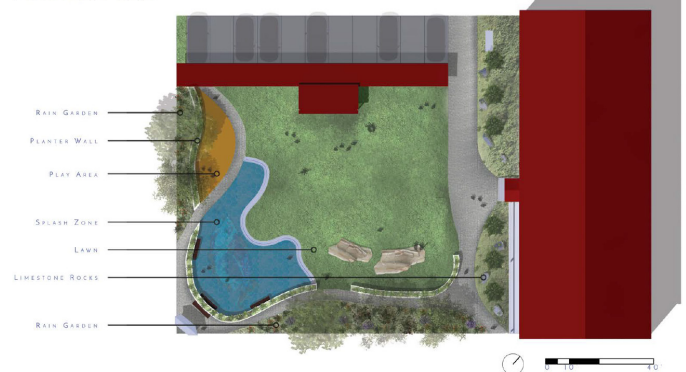


Students working with the community to develop plans for the site's redevelopment



An early concept for the development of the site with a stage, plantings, splash pad, and open space.

## MASTER PLAN



Site design showing market shelter, stage, splash pad, seating areas and open space.



A visualization of the design to interest funders and acquire grants.

November 24, 2018: Gov. Justice announces land and water conservation grant awards for Greenbrier and Pocahontas counties  
Town of Marlinton: The \$86,391 grant award for the Town of Marlinton will include the development of a new gateway park for the Town of Marlinton. The new Discovery Junction will adjoin the Marlinton Opera House with an outdoor pavilion, picnic and landscaping improvements. These improvements will serve to guide and direct visitors to the area's recreational resources including the Greenbrier River Trail and Monongahela National Forest besides staging local farmers markets and other community events. <https://mountainmessenger.com/gov-justice-announces-land-and-water-conservation-grant-awards-for-greenbrier-and-pocahontas-counties/>





The Discovery Junction ground-breaking ceremony and construction



The Discovery Junction construction photos

Peter Butler, Associate Professor & Extension Specialist.  
Landscape Architecture Program  
Director, School of Design and Community Development  
West Virginia University. [pebutler@mail.wvu.edu](mailto:pebutler@mail.wvu.edu)  
Lauren Bennett, Pocahontas County Parks & Recreation  
Carly Clevensline, WVU Landscape Architecture  
USFS MNF Representatives: Cindy Sandeno  
Pocahontas Opera House: Brynn Kusic  
Pocahontas County Extension Service: Lucia Mosesso  
Mayor Sam Felton, Marlinton WV  
Niharika Alahari, West Virginia University MLA  
Marlinton Community and WVU Students  
Todd Schoolcraft, Director of Landscape Architecture at  
E.L. Robinson Engineering

